



LINDEN  
GLOBAL LEARNING & SUPPORT



International School Psychology Services

# Psychoeducational Assessments

Including teacher consultations, parent meetings, recommendations, interventions, multilingual options, follow-up sessions and teacher workshops

Information for Parents

# Linden Global Learning Support

## About us



*"We believe that every child deserves an advocate who sees the great in them and has the skills to bring it out."*



Linden Founders  
**Dr. Christina Limbird  
& Chineme Ugbor**

## Linden in numbers since 2015

We supported  
**126**  
international  
schools  
worldwide

We helped  
**2526**  
students

We completed  
**909**  
assessments

We speak  
**30+**  
languages

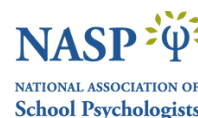
## Testimonial

*"The Linden psychologist was amazing! We loved having her here and her final reports were exceptional. They provided so much information that has been helpful for us when supporting our students."*



Head of Student Support  
**American International  
School Bucharest**

## Members of

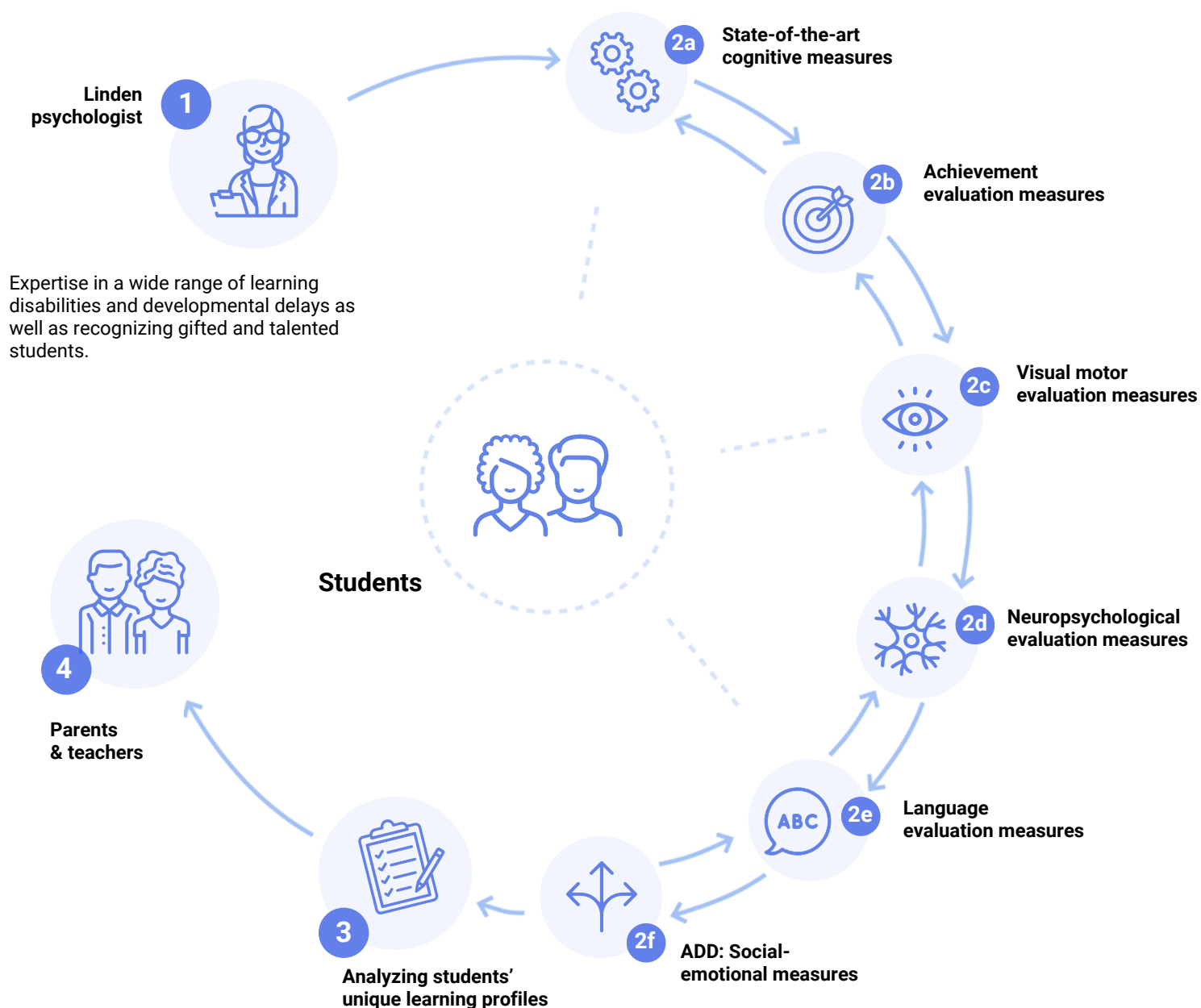


# Assessments

## Our Approach

Our evaluations can be conducted both onsite and online, and are designed to assess each student's strengths and areas for support. We also offer the additional option of bilingual assessments, enabling teachers to more effectively understand and unlock their multilingual students' full potential.

## Assessment process schema



After completion of the assessment, our school psychologists sit down for an extensive feedback session to help teachers and parents implement specially designed learning strategies.

# Getting started

## Step by step

