

LINDEN NEURODIVERSITY SUPPORT TEAM

# TEACHER & PARENT WORKSHOPS



## VISUAL SCHEDULES

How to create a visual schedule in the classroom or house and how to implement it effectively to promote structure and independence.

## SENSORY PROCESSING

Learn the basics of Sensory Processing Disorder, the common behaviors and strategies to support these children.

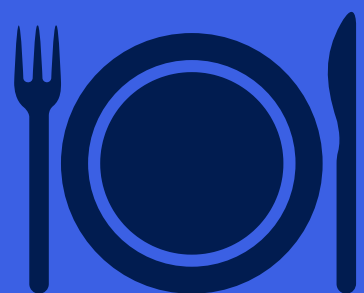


## HOME BEHAVIOR SYSTEMS

How to create and implement reward and consequence systems at home, choose the individualized goals that work best for your family, and eventually wean off them for independent success!

## PICKY EATERS

Understand the hierarchy of the feeding process, the components that are required and how to support children with a limited diet.



## SPELLING TO COMMUNICATE FOR NON-SPEAKING INDIVIDUALS

Just because an individual is not able to use speech as the primary means of communication, it does not mean that language or cognition is impaired. Learn how to advance communication access for non-speaking or unreliable speaking individuals through teaching them how to spell their thoughts.

## BENEFITS OF DANCE & MOVEMENT

What teachers can do in the classroom, or parents at home, to facilitate language and pre-verbal skills in a fun, creative manner.



FOR MORE INFORMATION ABOUT OUR TEAM VISIT US AT

<https://www.linden-education.com/neurodiversesupport>

LINDEN NEURODIVERSITY SUPPORT TEAM

# TEACHER & PARENT WORKSHOPS

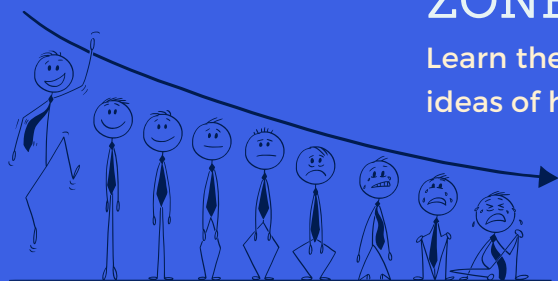


## BUILDING INDEPENDENCE IN CHILDREN WITH AUTISM

Parents of children with Autism are often so well trained in spotting tricky situation for their children and solving them before they become tricky. Learn how to discuss, equip and support children while they learn new skills and become more and more independent.

## USING PERSONAL INTERESTS AS LEVERAGE FOR LEARNING NEW SKILLS

How personal interests can be incorporated to get children to expand their comfort zone.

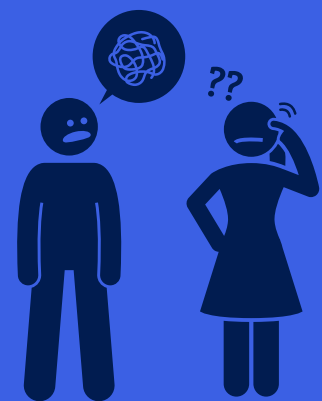


## ZONES OF REGULATION

Learn the basics of Zones of Regulation and ideas of how to use them at home and in school.

## FOUR FUNCTIONS OF BEHAVIORS AND HOW TO RESPOND TO EACH

Learn to identify the function of each behavior a child has and how to respond appropriately to increase preferred and decrease non-preferred behaviors.

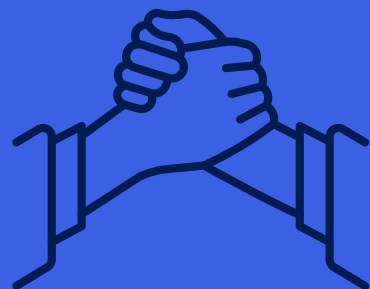


## LEARNING THROUGH PLAY

For parents or teachers to learn how to encourage social and play skills amongst children with Autism.

## CRISIS INTERVENTION

How to support children when they are in crisis and including before, during, and after. This also includes social/emotional support language.



FOR MORE INFORMATION ABOUT OUR TEAM VISIT US AT

<https://www.linden-education.com/neurodiversesupport>